



GUATEMALA • EL SALVADOR • HONDURAS • NICARAGUA • COSTA RICA
PANAMA • DOMINICAN REPUBLIC • COLOMBIA

*More than a logistic support,
We are your strategic ally*



About us



- We are a maritime transportation focused logistics company, founded in 1979.
- Our headquarters are located in San José, Costa Rica.
- Our company stocks are listed in the National Stock Exchange since 1998.



FitchRatings

Deloitte.



Bandera Azul Ecológica
COSTA RICA



BUSINESS ALLIANCE FOR SECURE COMMERCE

Regional Operations



- We provide logistics upstream and downstream solutions to our clients through our own offices in Central America, Dominican Republic and Colombia.
- We have logistics services in all borders and ports.

76 816
customs
operations
during
2020

41 years of
experience

859
colaborators



70
MILLION
DOLLARS
income
Intheyear

EIGHT operations in 8 latin
american countries

2020



OUR SERVICES



Our Services



Transportation

Inland transportation locally and regionally



Customs

Special regimes, tax financing



Warehouse

General, Fiscal, Dry, Temperature Controlled. ZLC
Crossdocking, Panama



Inventory Management and cargo distribution

Costa Rica, Nicaragua & Panama



Cargo consolidation

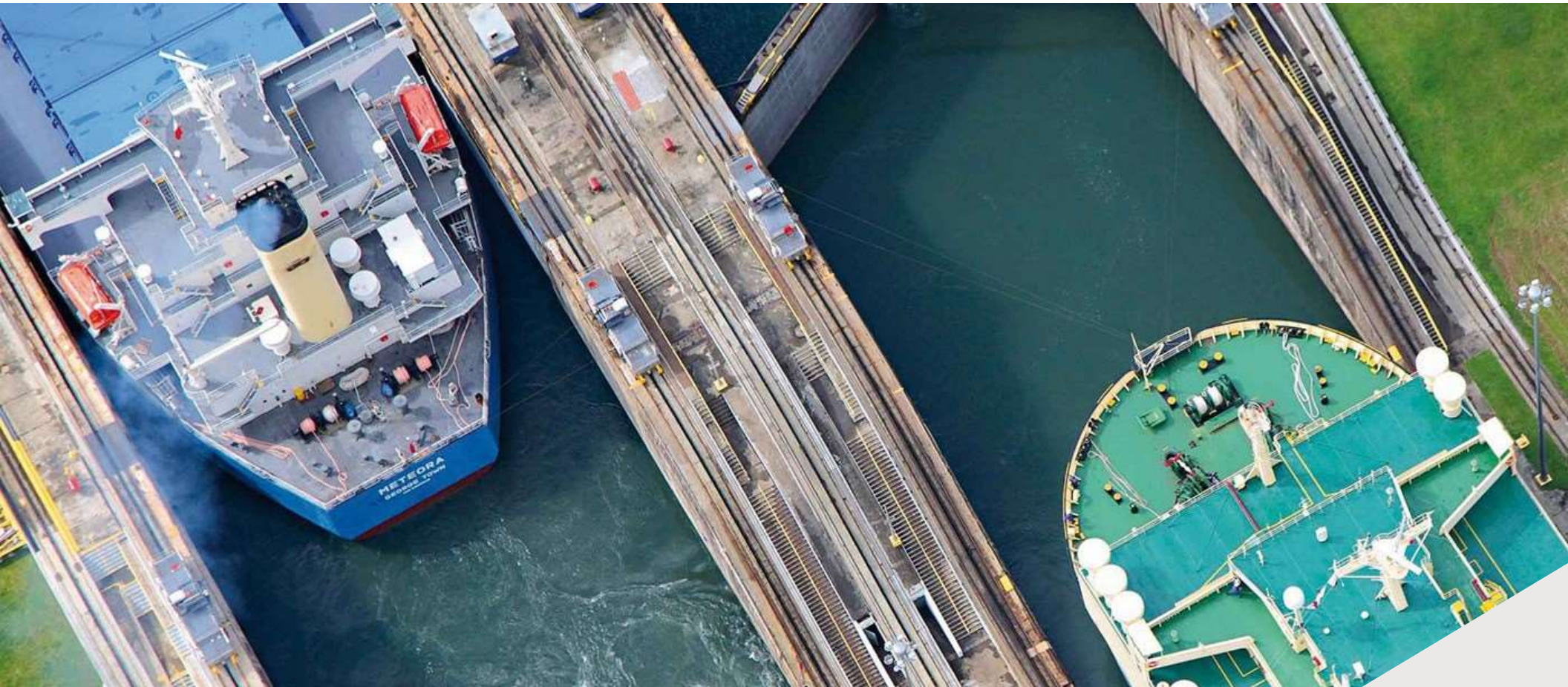
By Land, by sea and by air. NVOCC



Maritime

Ship agency, brokerage, stevedoring,
regular lines and cruises





Maritime Division





27,008 mobilized containers

875 Cargo Ships attended

149 Cruise ships attended in C.A.

* Annual indicators 2017



Maritime

Containers lines
Cruises lines

General Agents of:

- 2006 EVERGREEN MARINE CORP. in CR and Nicaragua.
- 2011 XCL (X-Press Feeders) in CR.
- 2012 MARFRET in CR and Nicaragua.

Members of Florida - Caribbean Cruise Association (FCCA)



Trust

- 36 years of experience
- Financial security

Services

- Ship agents
- Stevedoring company in Limon.
- Cargo and Ship Brokers.
- Port and transit agents at Panama Canal
- Services and technical support for owners, charterers and ship operators.
- Integrated Logistics Operations

Support

- Excellent relationship with the port authorities and government institutions.
- Members of the Maritime Chambers of Costa Rica, Panama and Nicaragua.



Maritime

General cargo line

2010 We opened operations in Panama, as logistic partners in the construction of the new channel locks.

2017 We start service in Colombia.

Operation Ports



CALDERA PORT



MOIN PORT



LIMON PORT



APM CONTAINER TERMINAL - MOIN



CORINTO PORT



CRISTOBAL PORT



MANZANILLO TERMINAL



BALBOA PORT



PSA TERMINAL



BAHIA LASMINA TERMINAL





Differentiation



What makes us different?



Facilities and presence Regional and International

- Own offices in the capitals of the countries of Central America.
- Solutions for each of the links in the supply chain process.



Experience

- More than 35 years as a ship agency.
- 10 years attending cruise ships.



Good practices

- Aligned to ISO 9001 standards (Accreditation Process)
- Use of SAP system in the financial area.
- Certificate BASC (*Business Alliance for Secure Commerce*).
- Certified agent IATA (*International Air Transport Association*).
- Ecological Blue Flag Certification.
- Credit rating A- (from BBB +) certified by Fitch Ratings.

Some of our customs and logistics clients



Some clients of the maritime agency



Canfornav Inc.



ILG Logistics

www.ilglogistics.com

Executive Vice-President Mauricio Bruce

email: mauricio.bruce@ilglogistics.com

Telephone: (506) 2586-9540

Maritime Division Director Óscar Álvarez

email: oscar.alvarez@ilglogistics.com

Telephone: (506) 2586-9520

Corporate Financial Director Noemy Segura

email: noemy.segura@ilglogistics.com

Telephone: (506) 2586-9530

Logistics Division Director Omar Ugalde

Email: omar.ugalde@ilglogistics.com

Telephone: (506) 2586-9545

ILG Supply Chain Director Josué Díaz

email: josue.diaz@ilglogistics.com

Telephone: (506) 2562-1005

TGD Regional Manager Luis Esteban Gutiérrez

email: luis.gutierrez@tgdworldwide.com

Telephone: (507) 446-1848

